

# TECHNICAL DATASHEET



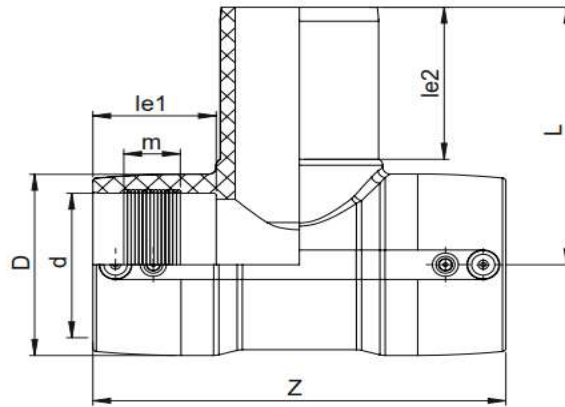
## EF EQUAL TEE 90°

04 Update - 04/2024

### TECHNICAL DATA

Article No	101 117 2041 0225
d (mm)	225
D (mm)	271
Z (mm)	406
L (mm)	285
le1 (mm)	105
le2 (mm)	120
m (mm)	
Weight (Kg)	9,400
Box Quantity (pcs)	1
Box Dimension (cm)	428x328x438

### INJECTION MOULDED



### IDENTIFICATION OF PRODUCT

D(mm)	225
SDR	11
RAW MATERIAL	PE 100
PRESSURE CLASS	16 Bar Water 10 Bar Gas
TRADEMARK	NTG
EXECUTION	Injection Moulded
STANDARD	EN 12201-3

### SPECIFICATION

EN 1555-3  
AS / NZS 4129  
Suitable for SDR11...17 pipe  
4 mm pin connectors  
borkod ve direnç yok

### EF SPECIFICATION

WELDING VOLTAGE	40V
RESISTANCE	Ω
WELDING TIME	Sec.
COOLING TIME	Min.
WINDING TYPE	Monofilar
WELDING BARCODE	



971420331803400906530118

Tolerance on diameters and thickness according to the standards. The other dimensions are specialized. Tolerance  $\pm 5\%$ . NTG PLASTIK reserves all the right to change any information without giving prior notice. The production, distribution and utilization of this document without explicit authorization is prohibited.